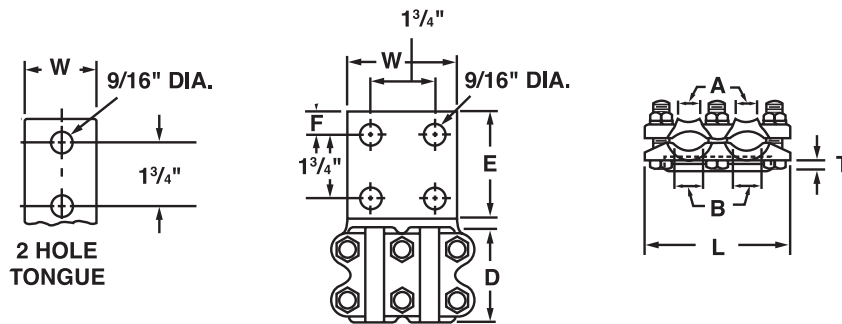
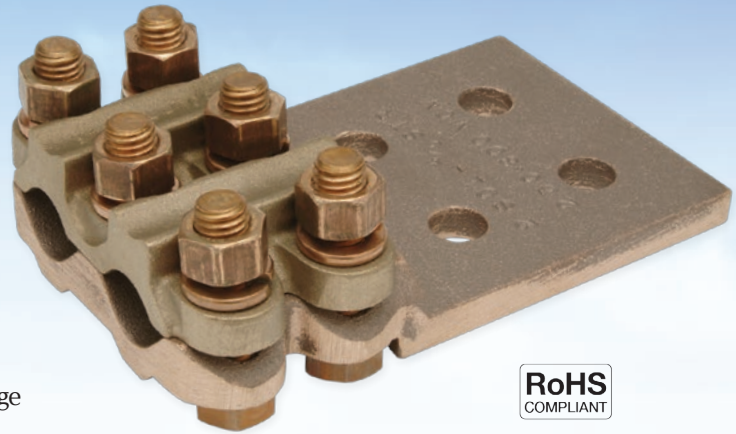


Bronze Terminals

Type RAR2

For two copper cables to flat

- Manufactured from high strength cast copper alloy
- Furnished with silicon bronze bolts, nuts, and lockwashers for corrosion resistance
- Reversible cap allows for expanded conductor range
- Side formed contact surfaces are standard and allow clearance for flush mounting
- Drilling in pads conform to NEMA standards for 1/2" hardware
- For tin plating, suffix catalog number with "-TN"



CATALOG NUMBER	A COPPER CONDUCTOR RANGE	B COPPER CONDUCTOR RANGE	NO. OF HOLES IN TONGUE	APPROXIMATE DIMENSIONS (IN.)						BOLT SIZE
				D	E	F	T	W	L	
RAR2-025-D	6 Sol. - 1 Str.	1/0 Str. - 250 kcmil	2	2.50	3.00	.63	.25	2.00	3.63	1/2
RAR2-025-F	6 Sol. - 4/0 Str.	2/0 Str. - 250 kcmil	4	2.50	3.00	.63	.25	3.00	3.63	1/2
RAR2-050-D	1/0 Str. - 4/0 Str.	250 - 500 kcmil	2	2.50	3.00	.63	.25	2.50	4.13	1/2
RAR2-050-E			4	2.50	4.00	1.13	.38	4.00	4.13	3/8
RAR2-080-D	2 Sol. - 4/0 Str.	250 - 800 kcmil	2	2.34	3.00	.63	.50	2.50	4.25	1/2
RAR2-080-E			4	2.34	4.00	1.13	.41	4.00	4.25	1/2
RAR2-100-D	4/0 Str. - 550 kcmil	600 - 1000 kcmil	2	3.00	3.00	.63	.50	2.50	4.56	1/2
RAR2-100-E			4	3.00	4.00	1.13	.50	4.00	4.56	1/2
RAR2-200-D	500 - 1000 kcmil	1100 - 2000 kcmil	2	5.25	3.00	.63	.56	2.50	5.38	1/2
RAR2-200-E			4	5.25	4.00	.63	.50	4.00	5.38	1/2